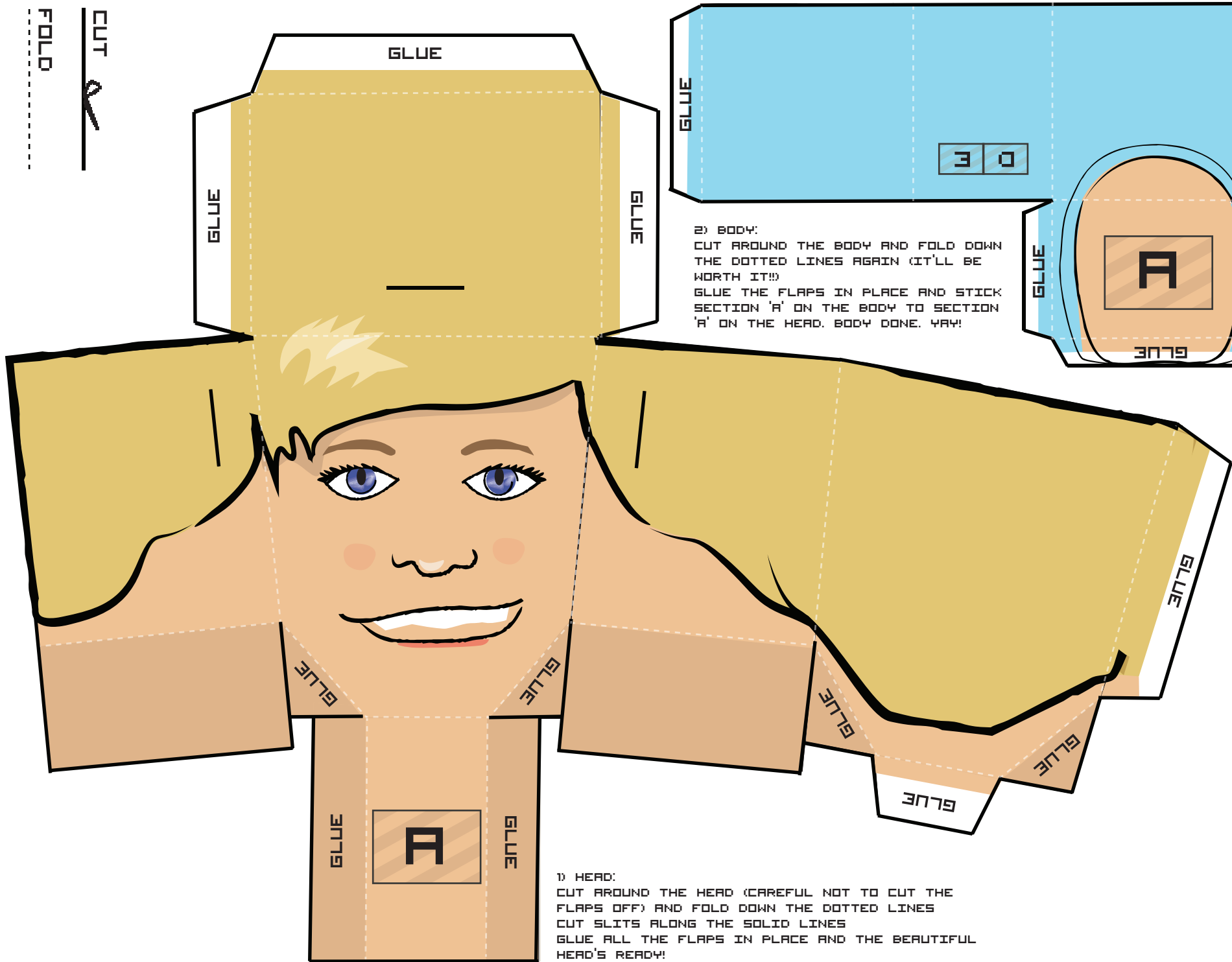


FOLD

CUT



2) BODY:

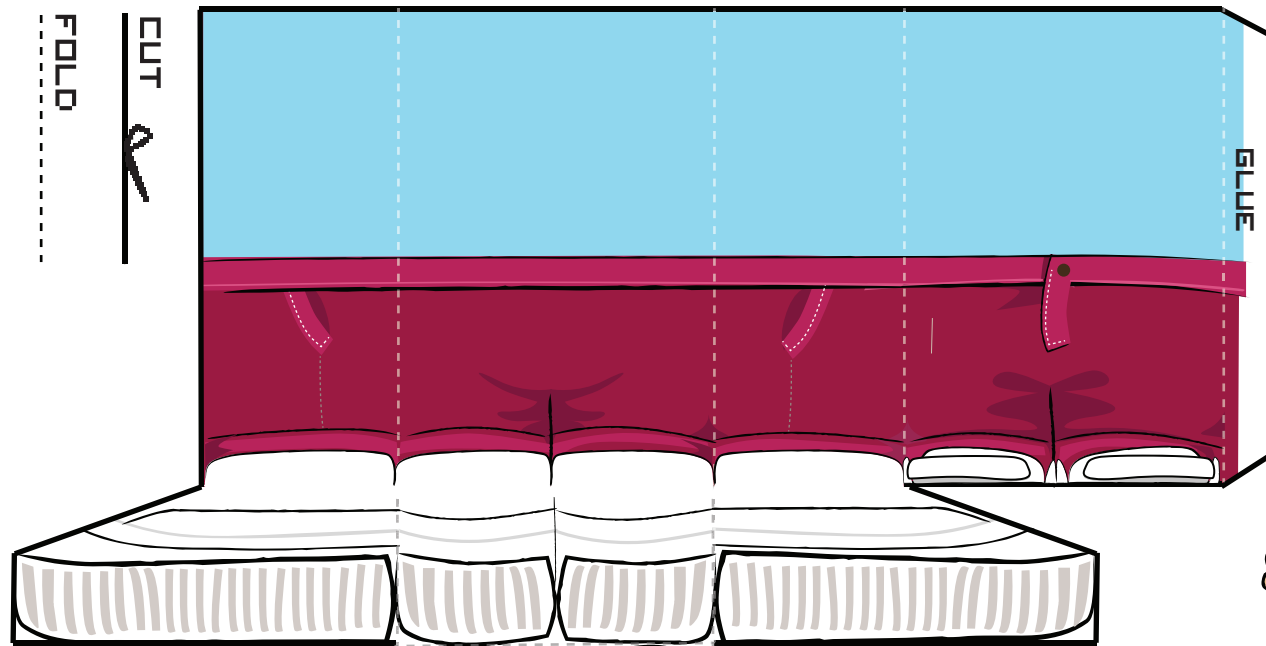
CUT AROUND THE BODY AND FOLD DOWN THE DOTTED LINES AGAIN (IT'LL BE WORTH IT!!)

GLUE THE FLAPS IN PLACE AND STICK SECTION 'A' ON THE BODY TO SECTION 'A' ON THE HEAD. BODY DONE. YAY!

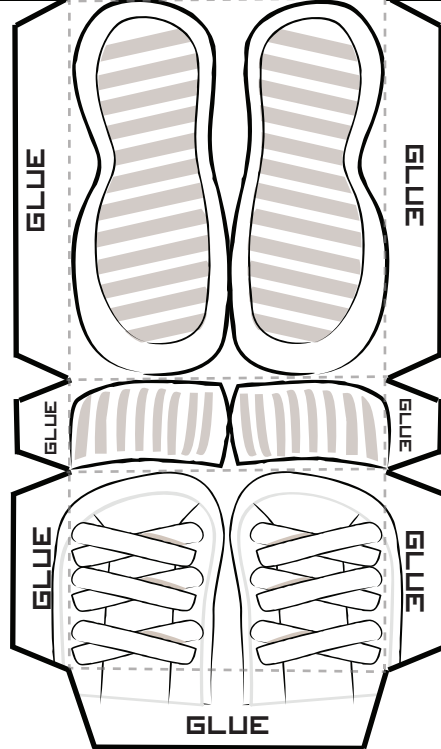
1) HEAD:

CUT AROUND THE HEAD (CAREFUL NOT TO CUT THE FLAPS OFF) AND FOLD DOWN THE DOTTED LINES
CUT SLITS ALONG THE SOLID LINES
GLUE ALL THE FLAPS IN PLACE AND THE BEAUTIFUL HEAD'S READY!

MIFALL

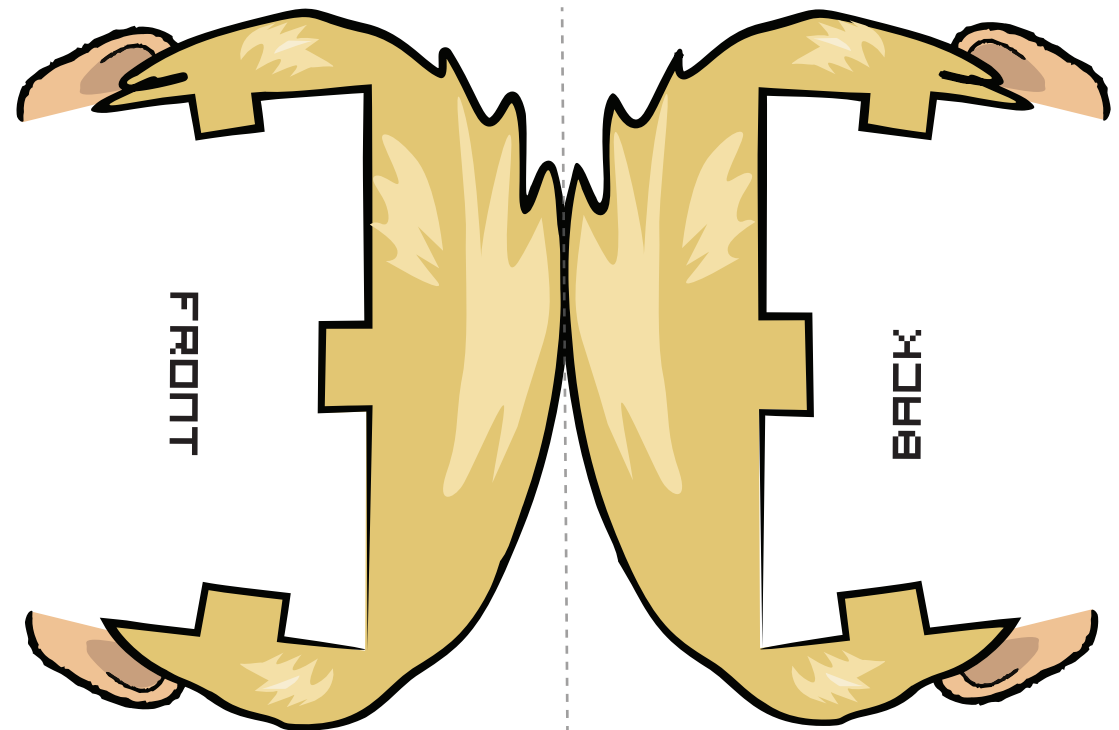
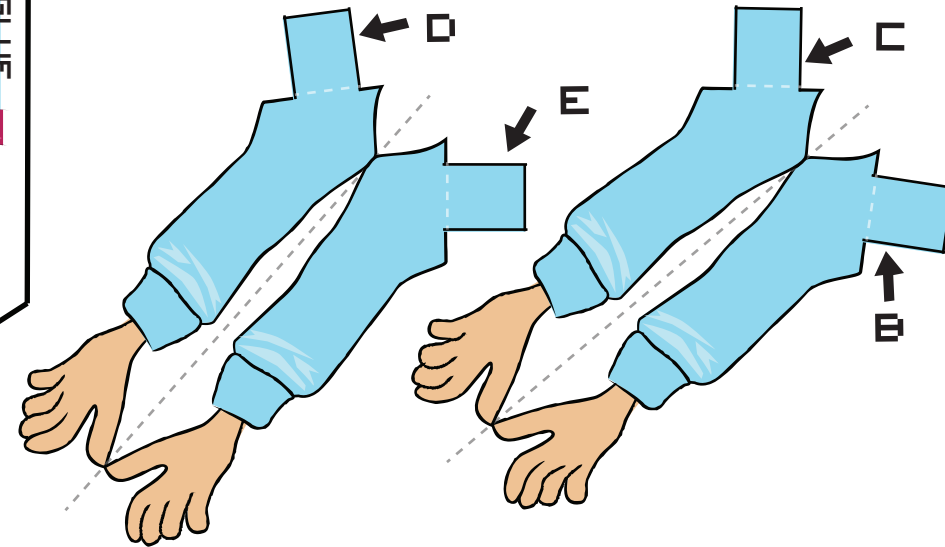


3) LEGS AND FEET:
CUT AROUND THE LEGS
AND FEET, FOLD DOWN
THE DOTTED LINES AND
GLUE THE FLAPS IN
PLACE
SLIDE THE LEGS AND
FEET INTO THE BOTTOM
OF THE BODY. WOOP!
YOU'RE DONE!



4) ARMS:

CUT OUT, GLUE, AND FOLD
STICK SECTION 'B' ON ONE ARM TO SECTION 'B' ON THE BODY (STILL
WITH ME?) STICK SECTION 'C' ON THE OTHER ARM TO SECTION 'C' ON
THE BODY. NEARLY THERE GUYS :P



5) HAIR:

CUT OUT, GLUE, AND FOLD
SLIDE THE HAIR INTO THE SLITS YOU MADE
IN THE HEAD